

Little Lions Class Autumn 1 Newsletter



September- Novembers edition. We will release a news letter with learning focuses, ideas to reinforce the teaching at home, some useful information and any local events that you might be interested in.

Dates for your diary

Tuesday 30th September

Professional Nursery Photos. If your child is not present on this day but would like a photo please arrive at 9:15am at the Main office.

Wednesday 8th October

Wellbeing Wednesday.

Children to come to Nursery in PJs. Snuggle up for a cosy day. (Please bring spare clothes in bag - no all in one baby grow suits)

22nd October 2:00-3:00pm

Halloween Themed Stay and Play with Family.

My key Person



Mrs Jenkins

The purpose of a key person is to have an adult in the nursery who builds a strong, individual relationship with your child. They will act as a central point of contact and advocate for both you and your child. Mrs Jenkins has already begun forming positive relationships in the nursery, learning lots about your individual child. She will ensure the learning environment is tailored to support your child's interests and needs and promote their wellbeing. In addition, I will be responsible for the overall development and learning that takes place in the Nursery, supporting your child to make the best progress in an environment that is rooted in compassion and care. All nursery adults will always offer a helping hand and supportive ear for you and your child.

In Nursery I need:



Everyday



Staff

Mrs Jenkins.

**EYFS Lead & Nursery Teacher
Monday, Wednesday, Thursday and
Friday**



Miss Caffelle.

**Nursery Assistant
Monday, Tuesday, Wednesday,
Thursday and Friday**



Mrs Mary.

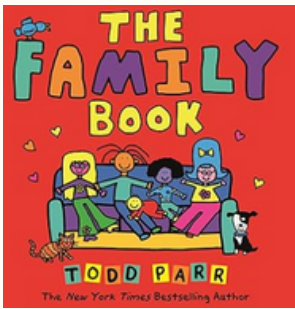
**Nursery Assistant
Monday, Tuesday, Wednesday,
Thursday and Friday**



Mrs Hall.

**Nursery Teacher
Tuesday**

Focus Stories



 Reading Tips

Our Learning

During our day, we will have large amounts of time in child initiated learning where we follow children's interests in play. During two adult direct carpet sessions we will use stories, possible links to our world such as Autumn and celebrations to plan for our directed learning time. The focus texts, rhymes and concepts have been carefully chosen to be ambitious and relevant to the ages and stages of our children and their next steps.

Rhyme Focuses:

Open, shut them
Wind the bobbin up
Incy winch Spider
Chop, Chop
Leaves are falling

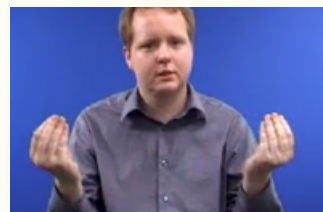
 Rhyme Playlist

Concept words

quantity and position

concepts:

Empty, full, a lot, same, both,
next to, beside, between,
behind, in front, around



'empty' British Sign Language

 Find the signs for these words to help consolidate learning

Communication and Language

Children in Nursery will have stories and rhymes regularly shared with them each day. This will build on children becoming familiar with a text, listening to repetitive language and repeated phrases, to support children acquiring new vocabulary and understanding sentence structure. We will always follow our 'Alive in 5' phrase, of sharing at minimum five stories or rhymes with children each day.

Our long term goals for children this half term are:

- Listen to and respond to familiar sounds, words, and stories.
- Build vocabulary through songs, rhymes, and daily routines.
- Engage in two-way communication (e.g. through conversations, storytelling).
- Understand simple instructions and questions.

Tips for using the toilet:

1. Simple clothing, like elasticated waistbands, can help.
2. Encourage independent dressing - they will get better with practice.
3. Encourage hand washing as a habit.
4. Regular drinks will help them and their bladder capacity.
5. Talk to the professionals - teachers or health visitors can offer good advice.

Physical Development

- Developing fine motor skills (e.g. grasping toys, mark making, developing hand dominance).
- Improving gross motor skills (e.g. climbing, running, balance, coordination).
- Learning about personal care: using cutlery independently, Independent use of the toilet.
- Engaging in sensory and movement-based activities.

Personal, Social and Emotional development

Children's personal, social and emotional development (PSED) is crucial for children to lead healthy and happy lives, and is fundamental to their cognitive development. Underpinning their personal development are the important attachments that shape their social world. Strong, warm and supportive relationships with adults enable children to learn how to understand their own feelings and those of others. We will be supporting and modelling with children to help them:

- Settle in and form strong attachments with familiar adults.
- Develop confidence to explore new environments.
- Increasingly follow rules, understanding why they are important.
- Talk with others to solve conflicts. Talk about their feelings using words like 'happy', 'sad', 'angry' or 'worried'.
- Play with one or more children, extending and elaborating play ideas.

Literacy

It is crucial for children to develop a life-long love of reading. Reading consists of two dimensions: language comprehension and word reading. Language comprehension (necessary for both reading and writing) starts from birth. It only develops when adults talk with children about the world around them and the books (stories and non-fiction) they read with them, and enjoy rhymes, poems and songs together.

Alongside our focus texts, and books selected for pleasure, we will use our phonics scheme to develop key early phonetic skills. This will support children to tune into their listening and develop rhythm and rhyme skills.

Children will be supported to develop an interest in making marks, beginning to distinguish between marks and pictures/drawings and begin to recognise some environmental print such as supermarket logos.

Children will also come home with their own name card, it would be great to practice noticing the letters in their name.

Expressive Arts

The development of children's artistic and cultural awareness supports their imagination and creativity.

It is important that children have regular opportunities to engage with the arts, enabling them to explore and play with a wide range of media and materials.

In Autumn 1, children develop recognition for colours and choose them for a purpose. Uses thick paint brushes. Uses playdough to roll, cut, ball, sausage. Builds towers with large construction equipment.

Maths

Developing a strong grounding in number is essential so that all children develop the necessary building blocks to excel mathematically. Children should be able to count confidently, develop a deep understanding of the numbers to 5, the relationships between them and the patterns within those numbers.

We will first explore recognising and building patterns.

We will support children to be able to verbally count to 5 with developing accuracy. To develop an understanding of '2' e.g. giving 2 items or noticing 2 in the environment.

Understanding the World

Understanding the world involves guiding children to make sense of their physical world and their community.

This half term, we will discuss our families, talking about who they live with and any pets children have. We will teach children to show respect and care for their environment and begin to notice the changes as we explore the season Autumn.

Update us:

- If your child is an existing Broadlands Nursery pupil and you would like them to still have a sleep in the day or any new medical/ dietary information is relevant, please let us know.

Try this at home:

- Make a game with some empty bottles and a ball and take turns to roll the ball and see how many bottles you can knock down. Talk about everything you do, saying things like "Well done, you knocked down 2 bottles, can you knock one more?"
- Fill the bottles with dried rice, pasta or beans. Listen to the sounds they make: can they begin to make connections with what the sounds remind them of? Can you hide a shake a bottle under a blanket, which sound are you shaking?

Attendance:

Please keep us informed of any planned or unexpected absences promptly. We have a duty of care to our children and if we have not heard from you by 11am to notify us of any absence we will contact you.

You can do this by calling into Broadlands School Office or by sending a message on Dojo.

We treat prolonged periods of absence seriously and will carry out welfare checks if we deem necessary.

Pick up and Drop off

Please arrive promptly to Nursery at your chosen start time of 8:30/12:15. It is important children build these morning routines and ensures an adult does not need to come away from supporting children to open the gate to late arrivals.

Pick up time is 11:30 for cubs class or 3:15 at the end of a full session. Please do not buzz the bell, we will bring children to you when they are ready. We do not have the capacity for children to be picked up at a range of times due to staffing ratios.

Class Dojo

This app is great for sharing messages and important info but for any worries, concerns, if you are requiring a more detailed chat or prompt replies, call the school office and request to speak with the Nursery.

Please share weekend news and wow moments from home. We welcome lots of photos sent in regularly, to share with the children. It promotes a sense of belonging in Nursery and allows them to reflect on these images, chat with friends and peers. Please send this in a direct message or post to your child profile.